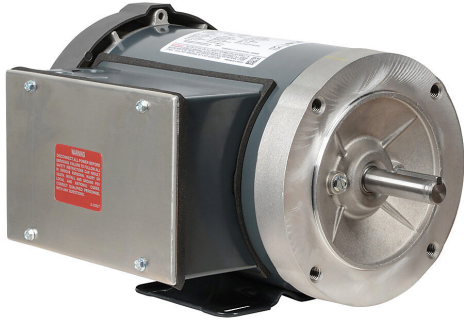


D314 Cut Sheet



Marathon standard efficiency AC induction motor, general purpose and 4-in-1, 1-1/2hp, 1-phase, 115/208-230 VAC, 3600rpm, TEFC, 56C frame, rolled steel, C-face/removable rigid base mount.

For complete product information, please see this item on our store at the following link:



<https://www.automationdirect.com/pn/D314>

Technical Specifications

Brand	Marathon
Item	Motor
Efficiency Group	Standard efficiency
Efficiency	78.5
Voltage Type	AC
Motor Type	Induction
Motor Application	General purpose and 4-in-1
Horsepower Rating	1-1/2hp
Number of Phases	1
Voltage Rating	115/208-230 VAC
Synchronous Speed	3600rpm
Nameplate RPM	3450rpm
Overload Type	None
Enclosure Type	TEFC
Shaft Type	Round with square key

Shaft Diameter	5/8in
Shaft Material	1144 Stressproof (C-223) steel
Motor Frame	56C
Frame Material	Rolled steel
Electrically Reversible	Yes
Insulation Class	Class B
IP Rating	IP43
Service Factor	1.15
Integrated Brake	No
NEMA Design	Design N
Junction Box Orientation	F1
Mounting	C-face/removable rigid base
Mounting Orientation	Horizontal
Manufacturer Part Number	056B34F5326

Agency Approvals

UL Listed File #	None
UL Recognized File #	E49747
UL Hazardous File #	None
CE	View CE declarations
CSA File #	LR2025
RoHS Status	Yes (See CE Doc)
EU REACH	View EU REACH document