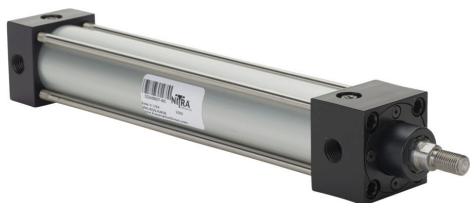


D224080DT-MC Cut Sheet



NITRA pneumatic cylinder, NFPA tie rod, 1-1/2in bore, 5/8in rod diameter, 8in stroke, double acting, magnetic piston, front and rear adjustable cushions, tapped end caps mount.

For complete product information, please see this item on our store at the following link:



<https://www.automationdirect.com/pn/D224080DT-MC>

Technical Specifications

Brand	NITRA
Item	Cylinder
Working Fluid	Air or inert gas
Cylinder Type	NFPA tie rod
Bore Diameter	1-1/2in
Stroke	8in
Port Size	1/4in female NPT
Mounting	Tapped end caps

Action Type	Double acting
Magnetic Piston	Magnetic piston
Adjustable Cushions	Front and rear adjustable cushions
Body Material	Aluminum
End Cap Material	Aluminum
Rod Material	Chrome-plated steel
Rod Diameter	5/8in
Rod Thread Size	7/16-20

Agency Approvals

UL Listed File #	None
UL Recognized File #	None
UL Hazardous File #	None
CE	None
CSA File #	None
RoHS Status	No
EU REACH	View EU REACH document

Dimensional Drawings



2D Drawing PDF Link:
<https://cdn.automationdirect.com/static/drawings/D224080DT-MC.pdf>
See store item page for other formats.