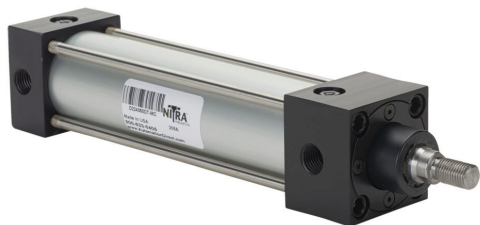


# D224050DT-MC Cut Sheet



NITRA pneumatic cylinder, NFPA tie rod, 1-1/2in bore, 5/8in rod diameter, 5in stroke, double acting, magnetic piston, front and rear adjustable cushions, tapped end caps mount.

For complete product information, please see this item on our store at the following link:



<https://www.automationdirect.com/pn/D224050DT-MC>

## Technical Specifications

<b>Brand</b>	NITRA
<b>Item</b>	Cylinder
<b>Working Fluid</b>	Air or inert gas
<b>Cylinder Type</b>	NFPA tie rod
<b>Bore Diameter</b>	1-1/2in
<b>Stroke</b>	5in
<b>Port Size</b>	1/4in female NPT
<b>Mounting</b>	Tapped end caps

<b>Action Type</b>	Double acting
<b>Magnetic Piston</b>	Magnetic piston
<b>Adjustable Cushions</b>	Front and rear adjustable cushions
<b>Body Material</b>	Aluminum
<b>End Cap Material</b>	Aluminum
<b>Rod Material</b>	Chrome-plated steel
<b>Rod Diameter</b>	5/8in
<b>Rod Thread Size</b>	7/16-20

## Agency Approvals

<b>UL Listed File #</b>	None
<b>UL Recognized File #</b>	None
<b>UL Hazardous File #</b>	None
<b>CE</b>	None
<b>CSA File #</b>	None
<b>RoHS Status</b>	No
<b>EU REACH</b>	<a href="#">View EU REACH document</a>

## Dimensional Drawings



2D Drawing PDF Link:  
<https://cdn.automationdirect.com/static/drawings/D224050DT-MC.pdf>  
See store item page for other formats.