

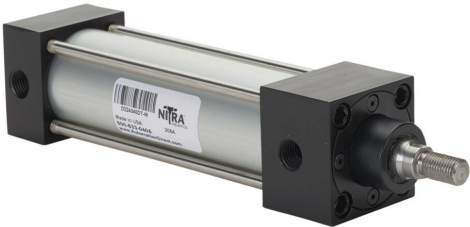
# D224040DT-M Cut Sheet

NITRA pneumatic cylinder, NFPA tie rod, 1-1/2in bore, 5/8in rod diameter, 4in stroke, double acting, magnetic piston, tapped end caps mount.

For complete product information, please see this item on our store at the following link:



<https://www.automationdirect.com/pn/D224040DT-M>



## Technical Specifications

Brand	NITRA
Item	Cylinder
Working Fluid	Air or inert gas
Cylinder Type	NFPA tie rod
Bore Diameter	1-1/2in
Stroke	4in
Port Size	1/4in female NPT
Mounting	Tapped end caps

Action Type	Double acting
Magnetic Piston	Magnetic piston
Body Material	Aluminum
End Cap Material	Aluminum
Rod Material	Chrome-plated steel
Rod Diameter	5/8in
Rod Thread Size	7/16-20

## Agency Approvals

UL Listed File #	None
UL Recognized File #	None
UL Hazardous File #	None
CE	None
CSA File #	None
RoHS Status	No
EU REACH	<a href="#">View EU REACH document</a>

## Dimensional Drawings



2D Drawing PDF Link:  
<https://cdn.automationdirect.com/static/drawings/D224040DT-M.pdf>  
See store item page for other formats.