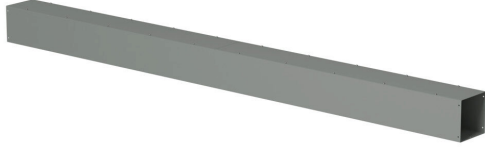


# CWSC8120NK Cut Sheet

Hammond CW series lay-in wireway, 8 x 8 x 120in, carbon steel, ANSI 61 gray, powder coat finish, NEMA 1.

For complete product information, please see this item on our store at the following link:



<https://www.automationdirect.com/pn/CWSC8120NK>

## Technical Specifications

<b>Brand</b>	Hammond
<b>Series</b>	CW
<b>Item</b>	Wireway
<b>Wireway Type</b>	Lay-in
<b>Size</b>	8 x 8 x 120in
<b>Material</b>	Carbon steel
<b>Color</b>	ANSI 61 gray
<b>Finish</b>	Powder coat
<b>Cover Type</b>	Screw cover
<b>Latch Type</b>	Screw clamps
<b>NEMA Rating</b>	1
<b>IP Rating</b>	IP20

## Agency Approvals

<b>UL Listed File #</b>	E186830
<b>RoHS Status</b>	Yes (See CE Doc)
<b>EU REACH</b>	<a href="#">View EU REACH document</a>
<b>Other</b>	<a href="#">RoHS Statement</a>

## Dimensional Drawings



2D Drawing PDF Link:  
<https://cdn.automationdirect.com/static/drawings/2d/CWSC8120NK.pdf>  
See store item page for other formats.