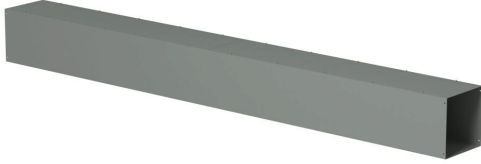


CWSC12120NK Cut Sheet

Hammond CW series lay-in wireway, 12 x 12 x 120in, carbon steel, ANSI 61 gray, powder coat finish, NEMA 1.

For complete product information, please see this item on our store at the following link:



<https://www.automationdirect.com/pn/CWSC12120NK>

Technical Specifications

Brand	Hammond
Series	CW
Item	Wireway
Wireway Type	Lay-in
Size	12 x 12 x 120in
Material	Carbon steel
Color	ANSI 61 gray
Finish	Powder coat
Cover Type	Screw cover
Latch Type	Screw clamps
NEMA Rating	1
IP Rating	IP20

Agency Approvals

UL Listed File #	E186830
RoHS Status	Yes (See CE Doc)
EU REACH	View EU REACH document
Other	RoHS Statement

Dimensional Drawings



2D Drawing PDF Link:
<https://cdn.automationdirect.com/static/drawings/2d/CWSC12120NK.pdf>
See store item page for other formats.