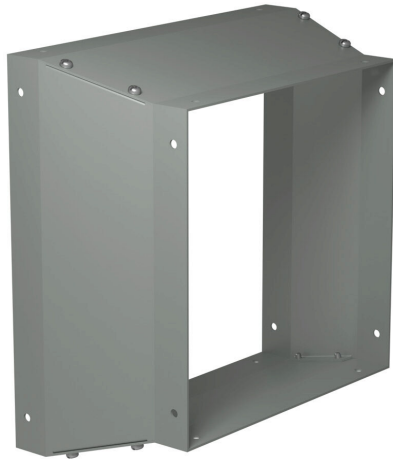


CWRD1210 Cut Sheet



Hammond CW series lay-in wireway fitting, reducer, 12 x 12in to 10 x 10in, carbon steel, ANSI 61 gray, powder coat finish, NEMA 1. For use with CW series wireway.

For complete product information, please see this item on our store at the following link:



<https://www.automationdirect.com/pn/CWRD1210>

Technical Specifications

Brand	Hammond
Item	Wireway fitting
Fitting Type	Reducer
Wireway Type	Lay-in
Size	12 x 12in to 10 x 10in
Material	Carbon steel
Color	ANSI 61 gray
Finish	Powder coat
Cover Type	Screw cover
Knockouts	No
NEMA Rating	1
IP Rating	IP20
For Use With	CW series wireway

Agency Approvals

UL Listed File #	E186830
RoHS Status	Yes (See CE Doc)
EU REACH	View EU REACH document
Other	RoHS Statement

Dimensional Drawings



2D Drawing PDF Link:
<https://cdn.automationdirect.com/static/drawings/2d/CWRD1210.pdf>
See store item page for other formats.