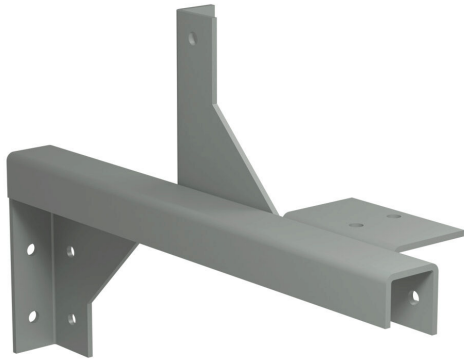


CWHW2 Cut Sheet



Hammond wall hanger, 2.5 x 2.5in, carbon steel, ANSI 61 gray, powder coat finish. For use with CW series wireway.

For complete product information, please see this item on our store at the following link:



<https://www.automationdirect.com/pn/CWHW2>

Technical Specifications

Brand	Hammond
Item	Hanger
Hanger Type	Wall
Size	2.5 x 2.5in
Material	Carbon steel
Color	ANSI 61 gray
Finish	Powder coat
Includes	Hardware
For Use With	CW series wireway

Agency Approvals

RoHS Status	Yes (See CE Doc)
EU REACH	View EU REACH document
Other	RoHS Statement

Dimensional Drawings



2D Drawing PDF Link:
<https://cdn.automationdirect.com/static/drawings/2d/CWHW2.pdf>
See store item page for other formats.