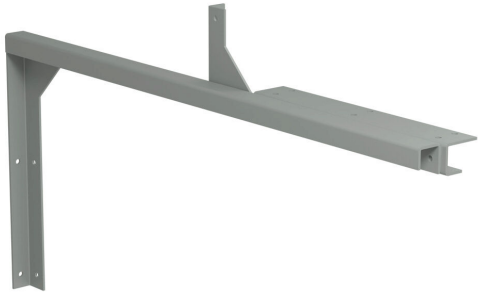


# CWHW12 Cut Sheet



Hammond wall hanger, 12 x 12in, carbon steel, ANSI 61 gray, powder coat finish. For use with CW series wireway.

For complete product information, please see this item on our store at the following link:



<https://www.automationdirect.com/pn/CWHW12>

---

## Technical Specifications

<b>Brand</b>	Hammond
<b>Item</b>	Hanger
<b>Hanger Type</b>	Wall
<b>Size</b>	12 x 12in
<b>Material</b>	Carbon steel
<b>Color</b>	ANSI 61 gray
<b>Finish</b>	Powder coat
<b>Includes</b>	Hardware
<b>For Use With</b>	CW series wireway

---

## Agency Approvals

<b>RoHS Status</b>	Yes (See CE Doc)
<b>EU REACH</b>	<a href="#">View EU REACH document</a>
<b>Other</b>	<a href="#">RoHS Statement</a>

---

## Dimensional Drawings



2D Drawing PDF Link:  
<https://cdn.automationdirect.com/static/drawings/2d/CWHW12.pdf>  
See store item page for other formats.