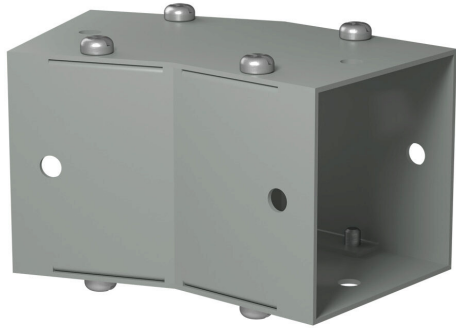


# CWEL222 Cut Sheet



Hammond CW series lay-in wireway fitting, 22.5-degree elbow, 2.5 x 2.5in, carbon steel, ANSI 61 gray, powder coat finish, NEMA 1. For use with CW series wireway.

For complete product information, please see this item on our store at the following link:



<https://www.automationdirect.com/pn/CWEL222>

## Technical Specifications

|                     |                   |
|---------------------|-------------------|
| <b>Brand</b>        | Hammond           |
| <b>Item</b>         | Wireway fitting   |
| <b>Fitting Type</b> | 22.5-degree elbow |
| <b>Wireway Type</b> | Lay-in            |
| <b>Size</b>         | 2.5 x 2.5in       |
| <b>Material</b>     | Carbon steel      |
| <b>Color</b>        | ANSI 61 gray      |
| <b>Finish</b>       | Powder coat       |
| <b>Cover Type</b>   | Screw cover       |
| <b>Knockouts</b>    | No                |
| <b>NEMA Rating</b>  | 1                 |
| <b>IP Rating</b>    | IP20              |
| <b>For Use With</b> | CW series wireway |

## Agency Approvals

|                         |  |
|-------------------------|--|
| <b>UL Listed File #</b> | E186830                                |
| <b>RoHS Status</b>      | Yes (See CE Doc)                       |
| <b>EU REACH</b>         | <a href="#">View EU REACH document</a> |
| <b>Other</b>            | <a href="#">RoHS Statement</a>         |

## Dimensional Drawings



2D Drawing PDF Link:  
<https://cdn.automationdirect.com/static/drawings/2d/CWEL222.pdf>  
See store item page for other formats.