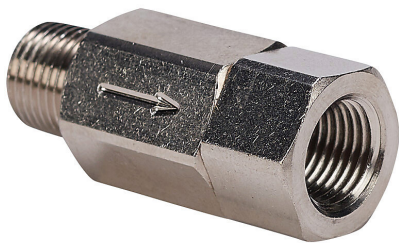


CVM18N-F18N Cut Sheet



NITRA pneumatic threaded fitting, check valve, nickel-plated brass body, nickel-plated brass threads, (1) 1/8in male NPT to (1) 1/8in female NPT connection(s).

For complete product information, please see this item on our store at the following link:



<https://www.automationdirect.com/pn/CVM18N-F18N>

Technical Specifications

Brand	NITRA
Item	Pneumatic Threaded Fitting
Fitting Type	Check valve
Body Material	Nickel-plated brass
Thread Material	Nickel-plated brass
Port Connection Info	(1) 1/8in male NPT to (1) 1/8in female NPT
Operating Pressure	125 psi
Operating Temperature	-20 to 160 deg F

Agency Approvals

UL Listed File #	None
UL Recognized File #	None
UL Hazardous File #	None
CSA File #	None
RoHS Status	No
EU REACH	View EU REACH document