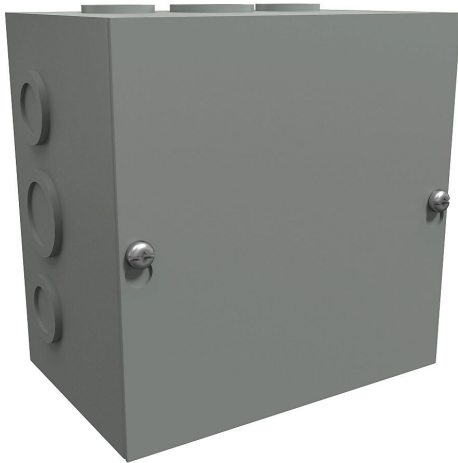


CSKO664 Cut Sheet



Hammond enclosure, NEMA 1, 6 x 6 x 4in (HxWxD), wall mount, with knockouts, carbon steel, ANSI 61 gray, powder coat finish, screw cover.

For complete product information, please see this item on our store at the following link:



<https://www.automationdirect.com/pn/CSKO664>

Technical Specifications

Brand	Hammond
Item	Enclosure
Slope Top	No
NEMA Rating	1
IP Rating	IP20
Nominal Enclosure Dimensions	6 x 6 x 4in (HxWxD)
Enclosure Height	6.00in
Enclosure Width	6.00in
Enclosure Depth	4.06in
Mounting	Wall
Integral Mounting Feet	No
Integral Mounting Flange	No
Dual Access	No
Knockouts	Yes
Material	Carbon steel
Color	ANSI 61 gray
Finish	Powder coat
Cover Type	Screw cover
Padlockable	No
Keylocking	No

Agency Approvals

UL Listed File #	E65324
UL Recognized File #	None
UL Hazardous File #	None
CSA File #	LR21001
RoHS Status	Meets RoHS Chemical Restrictions - No CE (See RoHS Statement Below)
EU REACH	View EU REACH document