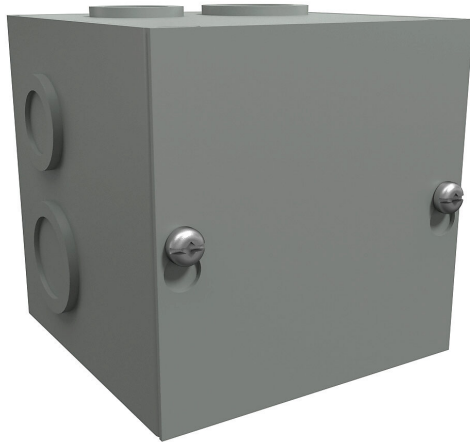


# CSKO444 Cut Sheet



Hammond enclosure, NEMA 1, 4 x 4 x 4in (HxWxD), wall mount, with knockouts, carbon steel, ANSI 61 gray, powder coat finish, screw cover.

For complete product information, please see this item on our store at the following link:



<https://www.automationdirect.com/pn/CSKO444>

## Technical Specifications

<b>Brand</b>	Hammond
<b>Item</b>	Enclosure
<b>Slope Top</b>	No
<b>3-Piece Assembly</b>	No
<b>Vented</b>	No
<b>NEMA Rating</b>	1
<b>IP Rating</b>	IP20
<b>Nominal Enclosure Dimensions</b>	4 x 4 x 4in (HxWxD)
<b>Enclosure Height</b>	4.00in
<b>Enclosure Width</b>	4.00in
<b>Enclosure Depth</b>	4.06in
<b>Mounting</b>	Wall

<b>Integral Mounting Feet</b>	No
<b>Integral Mounting Flange</b>	No
<b>Dual Access</b>	No
<b>Knockouts</b>	Yes
<b>Bottom Gland Plate</b>	No
<b>Material</b>	Carbon steel
<b>Color</b>	ANSI 61 gray
<b>Finish</b>	Powder coat
<b>Cover Type</b>	Screw cover
<b>Shelf</b>	No
<b>Padlockable</b>	No
<b>Keylocking</b>	No

## Agency Approvals

<b>UL Listed File #</b>	E65324
<b>UL Recognized File #</b>	None
<b>UL Hazardous File #</b>	None
<b>CSA File #</b>	LR21001
<b>RoHS Status</b>	Meets RoHS Chemical Restrictions - No CE (See RoHS Statement Below)
<b>EU REACH</b>	<a href="#">View EU REACH document</a>

## Dimensional Drawings



2D Drawing PDF Link:  
<https://cdn.automationdirect.com/static/drawings/CSKO444.pdf>  
See store item page for other formats.