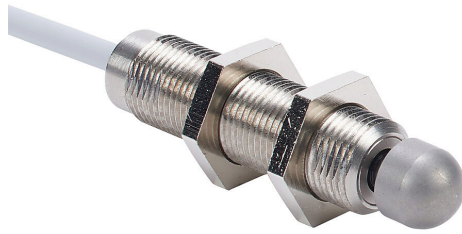


CSH121A-AL Cut Sheet



Metrol limit switch, sliding/angled, precision touch, 12mm diameter, threaded, 1mm pitch, 59.5mm length, 5mm radius head, stainless steel, 10mm plunger, 1N contact force, N.O. contact(s), 6.5ft/2m cable length, pigtail.

For complete product information, please see this item on our store at the following link:



<https://www.automationdirect.com/pn/CSH121A-AL>

Technical Specifications

Brand	Metrol
Item	Limit switch
Application	Sliding/angled
Switch Type	Precision touch
Diameter	12mm
Barrel Type	Threaded
Length	59.5mm
Head Type	5mm radius
Actuator Type	10mm plunger
Contact Force	1N
Contact Type	N.O.
Cable Length	6.5ft/2m
Connection	Pigtail
Conductor Size	30 AWG
Stroke	2.8mm
Repeatability	0.005mm
Thread Pitch	1mm
Material	Stainless steel
IP Rating	IP65
Operating Temperature	0 to 80 deg C
Indicating Type	LED indication
Includes	Mounting hardware

Agency Approvals

UL Listed File #	None
UL Recognized File #	None
UL Hazardous File #	None
CSA File #	None
RoHS Status	No
EU REACH	View EU REACH document