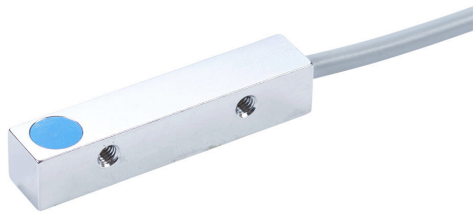


# CR8-AP-3A Cut Sheet



AutomationDirect inductive proximity sensor, rectangular, 8 x 8 x 40mm body, nickel-plated brass housing, PNP, N.O. output, 3mm sensing distance, semi-flush, 1 kHz switching frequency, IP67, pigtail.

For complete product information, please see this item on our store at the following link:



<https://www.automationdirect.com/pn/CR8-AP-3A>

## Technical Specifications

Brand	AutomationDirect
Item	Proximity sensor
Sensor Type	Inductive
Application	Standard duty and small space
Shape	Rectangular
Housing Size	8 x 8 x 40mm body
Housing Material	Nickel-plated brass
Sensing Method	Triple sensing
Adjustable	No
Number of Wires	3
Switching Output	PNP
Operation Mode	N.O. output
Sensing Distance	3mm

Mounting Type	Semi-flush
IO-Link Compatible	No
Switching Frequency	1 kHz
Operating Voltage	10-30 VDC
Operating Temperature	-25 to 70c
Weld Field Immune	No
Chip Immune	No
IP Rating	IP67
Connection	Pigtail
Conductor Size	26 AWG
Cable Length	6.5ft/2m
Includes	Mounting hardware

## Agency Approvals

UL Listed File #	E328811
UL Recognized File #	None
UL Hazardous File #	None
CE	<a href="#">View CE declarations</a>
RoHS Status	Yes (See CE Doc)
EU REACH	<a href="#">View EU REACH document</a>

## Dimensional Drawings



2D Drawing PDF Link:  
<https://cdn.automationdirect.com/static/drawings/CR8-AP-3A.pdf>  
See store item page for other formats.