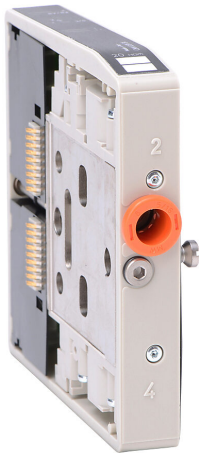


CMV-D3X-3X Cut Sheet



NITRA pneumatic modular plate, intermediate exhaust, Cv=0.65, 5/16in (8mm) PTC tubing exhaust(s), reinforced technopolymer body, IP65.

For complete product information, please see this item on our store at the following link:



<https://www.automationdirect.com/pn/CMV-D3X-3X>

Technical Specifications

Brand	NITRA
Item	Modular plate
Working Fluid	Pneumatic
Pneumatic Function	Intermediate exhaust
Flow Coefficient	0.65
Exhaust Port	5/16in (8mm) PTC tubing
Body Material	Reinforced technopolymer
IP Rating	IP65
For Use With	CMV series solenoid valves

Agency Approvals

UL Listed File #	None
UL Recognized File #	None
UL Hazardous File #	None
CE	None
CSA File #	None
RoHS Status	No
EU REACH	View EU REACH document