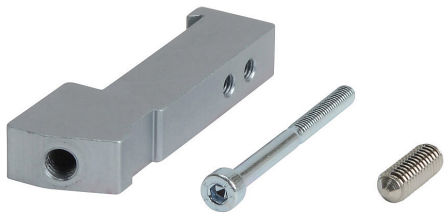


# CMV-ACC04 Cut Sheet



NITRA 35mm DIN rail mounting bracket, for use with CMV series solenoid valves. Mounting screws included.

For complete product information, please see this item on our store at the following link:



<https://www.automationdirect.com/pn/CMV-ACC04>

## Technical Specifications

Brand	NITRA
Item	35mm DIN rail mounting bracket
Replacement	No
For Use With	CMV series solenoid valves
Includes	Mounting screws

## Agency Approvals

UL Listed File #	None
UL Recognized File #	None
UL Hazardous File #	None
CE	None
CSA File #	None
RoHS Status	No
EU REACH	<a href="#">View EU REACH document</a>