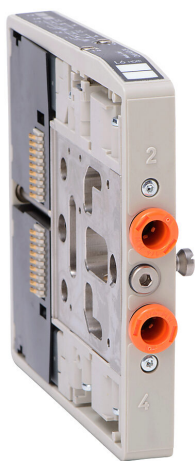


# CMV-A3L-2A Cut Sheet



NITRA solenoid valve, double compact modular, 3-way, 2-position, (1) N.C. / (1) N.O., single solenoid spring return, reinforced technopolymer body, IP65, locking manual override, (2) 1/4in push-to-connect outlet(s), Cv=0.5, 24 VDC.

For complete product information, please see this item on our store at the following link:



<https://www.automationdirect.com/pn/CMV-A3L-2A>

## Technical Specifications

Brand	NITRA
Item	Valve
Working Fluid	Pneumatic
Valve Type	Solenoid directional control
IP Rating	IP65
Port Quantity	3-way
Number Of Positions	2
Valve Configuration	(1) N.C. / (1) N.O.
Action	Single solenoid spring return
Body Material	Reinforced technopolymer

Outlet Port	(2) 1/4in push-to-connect
Manual Override Type	Locking
Flow Coefficient	0.5
Operating Voltage	24 VDC
Indicating Type	LED indication
Form Factor	Double compact modular
Requires	One CMV series left end plate and right end plate for any combination of one to sixteen solenoids
Additional Information	Valve uses two of the available 16 wiring positions on the inlet plate

## Agency Approvals

UL Listed File #	None
UL Recognized File #	None
UL Hazardous File #	None
CE	None
CSA File #	None
RoHS Status	No
EU REACH	View EU REACH document

## Dimensional Drawings



2D Drawing PDF Link:  
<https://cdn.automationdirect.com/static/drawings/CMV-A3L-2A.pdf>  
See store item page for other formats.