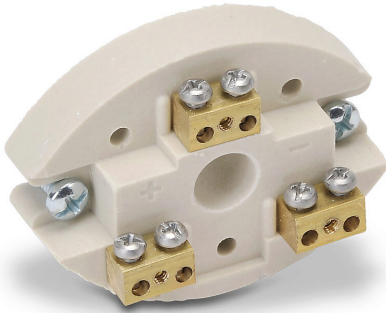


# CHTB-3 Cut Sheet



ProSense terminal base, (3) brass terminals with stainless steel screws, ceramic. For use with ProSense temperature probe connection heads.

For complete product information, please see this item on our store at the following link:



<https://www.automationdirect.com/pn/CHTB-3>

---

## Technical Specifications

<b>Brand</b>	ProSense
<b>Item</b>	Terminal base
<b>Electrical Connection</b>	(3) brass terminals with stainless steel screws
<b>Material</b>	Ceramic
<b>For Use With</b>	ProSense temperature probe connection heads
<b>Includes</b>	(2) mounting screws

---

## Agency Approvals

<b>UL Listed File #</b>	None
<b>UL Recognized File #</b>	None
<b>UL Hazardous File #</b>	None
<b>CE</b>	None
<b>CSA File #</b>	None
<b>RoHS Status</b>	No
<b>EU REACH</b>	<a href="#">View EU REACH document</a>

---

## Dimensional Drawings



2D Drawing PDF Link:  
<https://cdn.automationdirect.com/static/drawings/CHTB-3.pdf>  
See store item page for other formats.