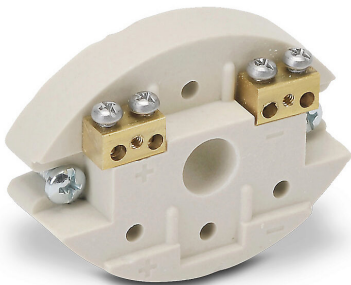


CHTB-2 Cut Sheet



ProSense terminal base, (2) brass terminals with stainless steel screws, ceramic. For use with ProSense temperature probe connection heads.

For complete product information, please see this item on our store at the following link:



<https://www.automationdirect.com/pn/CHTB-2>

Technical Specifications

Brand	ProSense
Item	Terminal base
Electrical Connection	(2) brass terminals with stainless steel screws
Material	Ceramic
For Use With	ProSense temperature probe connection heads
Includes	(2) mounting screws

Agency Approvals

UL Listed File #	None
UL Recognized File #	None
UL Hazardous File #	None
CE	None
CSA File #	None
RoHS Status	No
EU REACH	View EU REACH document

Dimensional Drawings



2D Drawing PDF Link:
<https://cdn.automationdirect.com/static/drawings/CHTB-2.pdf>
See store item page for other formats.