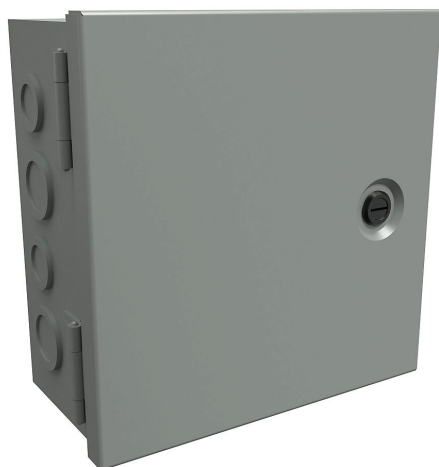


# CHKO36246 Cut Sheet



Hammond enclosure, NEMA 1, 36 x 24 x 6in (HxWxD), wall mount, with knockouts, carbon steel, ANSI 61 gray, powder coat finish, single-door, 1/4-turn flush-mounted latch.

For complete product information, please see this item on our store at the following link:



<https://www.automationdirect.com/pn/CHKO36246>

## Technical Specifications

|                                     |                       |
|-------------------------------------|-----------------------|
| <b>Brand</b>                        | Hammond               |
| <b>Item</b>                         | Enclosure             |
| <b>Slope Top</b>                    | No                    |
| <b>3-Piece Assembly</b>             | No                    |
| <b>Vented</b>                       | No                    |
| <b>NEMA Rating</b>                  | 1                     |
| <b>IP Rating</b>                    | IP30                  |
| <b>Nominal Enclosure Dimensions</b> | 36 x 24 x 6in (HxWxD) |
| <b>Enclosure Height</b>             | 36.38in               |
| <b>Enclosure Width</b>              | 24.30in               |
| <b>Enclosure Depth</b>              | 6.13in                |
| <b>Mounting</b>                     | Wall                  |
| <b>Integral Mounting Feet</b>       | No                    |
| <b>Integral Mounting Flange</b>     | No                    |

|                                  |                              |
|----------------------------------|------------------------------|
| <b>Dual Access</b>               | No                           |
| <b>Knockouts</b>                 | Yes                          |
| <b>Bottom Gland Plate</b>        | No                           |
| <b>Material</b>                  | Carbon steel                 |
| <b>Color</b>                     | ANSI 61 gray                 |
| <b>Finish</b>                    | Powder coat                  |
| <b>Cover Type</b>                | Single-door                  |
| <b>Hinge Type</b>                | Butt hinges                  |
| <b>Number of Hinges Per Door</b> | 2                            |
| <b>Latch Type</b>                | 1/4-turn flush-mounted latch |
| <b>Number Of Latches</b>         | 1                            |
| <b>Shelf</b>                     | No                           |
| <b>Padlockable</b>               | No                           |
| <b>Keylocking</b>                | No                           |

## Agency Approvals

|                             |   |
|-----------------------------|---|
| <b>UL Listed File #</b>     | E65324  |
| <b>UL Recognized File #</b> | None  |
| <b>UL Hazardous File #</b>  | None  |
| <b>CSA File #</b>           | LR21001   |
| <b>RoHS Status</b>          | Meets RoHS Chemical Restrictions - No CE (See RoHS Statement Below) |
| <b>EU REACH</b>             | <a href="#">View EU REACH document</a>                              |

## Dimensional Drawings



2D Drawing PDF Link:  
<https://cdn.automationdirect.com/static/drawings/CHKO36246.pdf>  
See store item page for other formats.