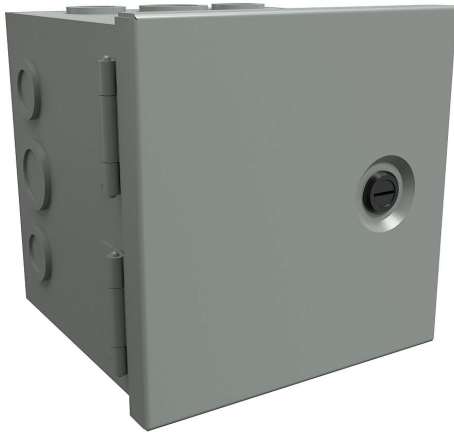


# CHKO24246 Cut Sheet



Hammond enclosure, NEMA 1, 24 x 24 x 6in (HxWxD), wall mount, with knockouts, carbon steel, ANSI 61 gray, powder coat finish, single-door, 1/4-turn flush-mounted latch.

For complete product information, please see this item on our store at the following link:



<https://www.automationdirect.com/pn/CHKO24246>

## Technical Specifications

<b>Brand</b>	Hammond	<b>Dual Access</b>	No
<b>Item</b>	Enclosure	<b>Knockouts</b>	Yes
<b>Slope Top</b>	No	<b>Material</b>	Carbon steel
<b>NEMA Rating</b>	1	<b>Color</b>	ANSI 61 gray
<b>IP Rating</b>	IP30	<b>Finish</b>	Powder coat
<b>Nominal Enclosure Dimensions</b>	24 x 24 x 6in (HxWxD)	<b>Cover Type</b>	Single-door
<b>Enclosure Height</b>	24.38in	<b>Hinge Type</b>	Butt hinges
<b>Enclosure Width</b>	24.30in	<b>Number of Hinges Per Door</b>	2
<b>Enclosure Depth</b>	6.12in	<b>Latch Type</b>	1/4-turn flush-mounted latch
<b>Mounting</b>	Wall	<b>Number Of Latches</b>	1
<b>Integral Mounting Feet</b>	No	<b>Padlockable</b>	No
<b>Integral Mounting Flange</b>	No	<b>Keylocking</b>	No

## Agency Approvals

<b>UL Listed File #</b>	E65324
<b>UL Recognized File #</b>	None
<b>UL Hazardous File #</b>	None
<b>CSA File #</b>	LR21001
<b>RoHS Status</b>	Meets RoHS Chemical Restrictions - No CE (See RoHS Statement Below)
<b>EU REACH</b>	<a href="#">View EU REACH document</a>