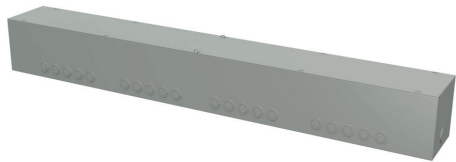


CGT4866 Cut Sheet

Hammond wiring trough, 6 x 6 x 48in (HxDxL), NEMA 1, carbon steel, ANSI 61 gray, powder coat finish, screw cover.

For complete product information, please see this item on our store at the following link:



<https://www.automationdirect.com/pn/CGT4866>

Technical Specifications

Brand	Hammond
Item	Wiring trough
NEMA Rating	1
Nominal Enclosure Dimensions	6 x 6 x 48in (HxWxD)
Enclosure Height	6.07in
Enclosure Depth	6.00in
Enclosure Length	48.00in

Integral Mounting Feet	No
Knockouts	Yes
Material	Carbon steel
Color	ANSI 61 gray
Finish	Powder coat
Cover Type	Screw cover

Agency Approvals

UL Listed File #	E186830
UL Recognized File #	None
UL Hazardous File #	None
CSA File #	None
RoHS Status	Meets RoHS Chemical Restrictions - No CE (See RoHS Statement Below)
EU REACH	View EU REACH document
Other	RoHS Statement

Dimensional Drawings



2D Drawing PDF Link:
<https://cdn.automationdirect.com/static/drawings/CGT4866.pdf>
See store item page for other formats.