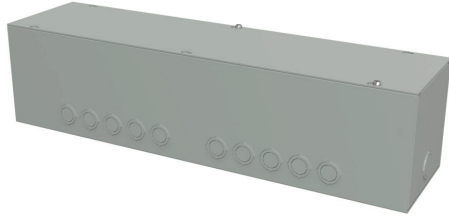


# CGT2466 Cut Sheet

Hammond wiring trough, 6 x 6 x 24in (HxDxL), NEMA 1, carbon steel, ANSI 61 gray, powder coat finish, screw cover.

For complete product information, please see this item on our store at the following link:



<https://www.automationdirect.com/pn/CGT2466>

---

## Technical Specifications

<b>Brand</b>	Hammond
<b>Item</b>	Wiring trough
<b>NEMA Rating</b>	1
<b>Nominal Enclosure Dimensions</b>	6 x 6 x 24in (HxWxD)
<b>Enclosure Height</b>	6.07in
<b>Enclosure Depth</b>	6.00in
<b>Enclosure Length</b>	24.00in
<b>Integral Mounting Feet</b>	No
<b>Knockouts</b>	Yes
<b>Material</b>	Carbon steel
<b>Color</b>	ANSI 61 gray
<b>Finish</b>	Powder coat
<b>Cover Type</b>	Screw cover

---

## Agency Approvals

<b>UL Listed File #</b>	E186830
<b>UL Recognized File #</b>	None
<b>UL Hazardous File #</b>	None
<b>CSA File #</b>	None
<b>RoHS Status</b>	Meets RoHS Chemical Restrictions - No CE (See RoHS Statement Below)
<b>EU REACH</b>	<a href="#">View EU REACH document</a>
<b>Other</b>	<a href="#">RoHS Statement</a>