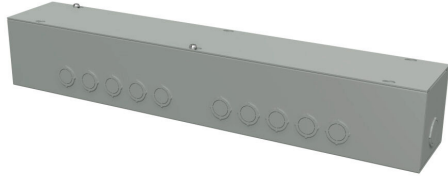


# CGT2444 Cut Sheet

Hammond wiring trough, 4 x 4 x 24in (HxDxL), NEMA 1, carbon steel, ANSI 61 gray, powder coat finish, screw cover.

For complete product information, please see this item on our store at the following link:



<https://www.automationdirect.com/pn/CGT2444>

## Technical Specifications

|                                     |                      |
|-------------------------------------|----------------------|
| <b>Brand</b>                        | Hammond              |
| <b>Item</b>                         | Wiring trough        |
| <b>NEMA Rating</b>                  | 1                    |
| <b>Nominal Enclosure Dimensions</b> | 4 x 4 x 24in (HxWxD) |
| <b>Enclosure Height</b>             | 4.07in               |
| <b>Enclosure Depth</b>              | 4.00in               |
| <b>Enclosure Length</b>             | 24.00in              |
| <b>Integral Mounting Feet</b>       | No                   |
| <b>Knockouts</b>                    | Yes                  |
| <b>Material</b>                     | Carbon steel         |
| <b>Color</b>                        | ANSI 61 gray         |
| <b>Finish</b>                       | Powder coat          |
| <b>Cover Type</b>                   | Screw cover          |

## Agency Approvals

|                             |   |
|-----------------------------|---|
| <b>UL Listed File #</b>     | E186830   |
| <b>UL Recognized File #</b> | None  |
| <b>UL Hazardous File #</b>  | None  |
| <b>CSA File #</b>           | None  |
| <b>RoHS Status</b>          | Meets RoHS Chemical Restrictions - No CE (See RoHS Statement Below) |
| <b>EU REACH</b>             | <a href="#">View EU REACH document</a>                              |
| <b>Other</b>                | <a href="#">RoHS Statement</a>                                      |