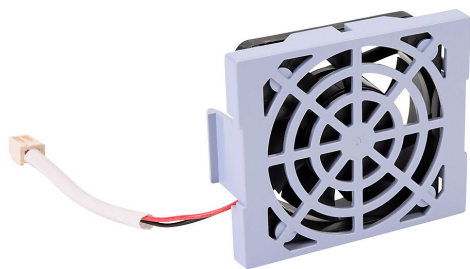


CFW300-FAN-A Cut Sheet

WEG Electric CFW300 series main cooling fan, replacement, 50 x 50 x 15mm, 12 VDC. For use with WEG CFW300Axxx AC drives.

For complete product information, please see this item on our store at the following link:



<https://www.automationdirect.com/pn/CFW300-FAN-A>

Technical Specifications

Brand	WEG Electric
Item	Cooling fan
Fan Type	Main
Series	CFW300
Replacement	Yes
Size	50 x 50 x 15mm
Voltage Rating	12 VDC
For Use With	WEG CFW300Axxx AC drives

Agency Approvals

UL Listed File #	None
UL Recognized File #	None
UL Hazardous File #	None
CE	None
CSA File #	None
RoHS Status	No
EU REACH	View EU REACH document

Dimensional Drawings



2D Drawing PDF Link:
<https://cdn.automationdirect.com/static/drawings/CFW300-FAN-A.pdf>
See store item page for other formats.