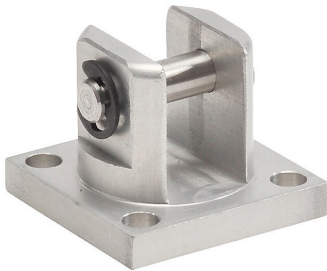


CCB-17 Cut Sheet



NITRA rod clevis, anodized aluminum, stainless steel pin. For use with CRP-09, CRP-12, or CRP-17 rod eyes.

For complete product information, please see this item on our store at the following link:



<https://www.automationdirect.com/pn/CCB-17>

Technical Specifications

Brand	NITRA
Item	Rod clevis
Material	Anodized aluminum, stainless steel pin
For Use With	CRP-09, CRP-12, or CRP-17 rod eyes

Agency Approvals

UL Listed File #	None
UL Recognized File #	None
UL Hazardous File #	None
CE	None
CSA File #	None
RoHS Status	No
EU REACH	View EU REACH document

Dimensional Drawings



2D Drawing PDF Link:
<https://cdn.automationdirect.com/static/drawings/CCB-17.pdf>
See store item page for other formats.