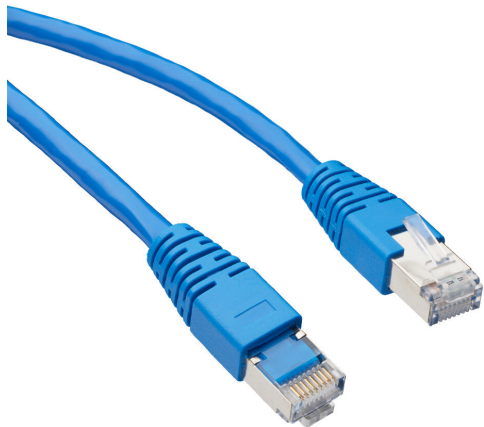


C6A-STPBL-S3 Cut Sheet



AutomationDirect Cat6a Ethernet straight-through patch cable, STP (overall foil shield), RJ45 male to RJ45 male, 3ft cable length, blue. For use with 10/100/1000/10000 Mbps networks.

For complete product information, please see this item on our store at the following link:



<https://www.automationdirect.com/pn/C6A-STPBL-S3>

Technical Specifications

Brand	AutomationDirect
Item	Cable
Cable Type	Cat6a Ethernet straight-through patch
Connection 1	RJ45 male
Connection 2	RJ45 male
Jacket Material	PVC
Jacket Color	Blue
Shield Type	STP (overall foil shield)
Cable Length	3ft
For Use With	10/100/1000/10000 Mbps networks

Agency Approvals

UL Listed File #	None
UL Recognized File #	None
UL Hazardous File #	None
CE	View CE declarations
CSA File #	None
RoHS Status	Yes (See CE Doc)
EU REACH	View EU REACH document

Dimensional Drawings



2D Drawing PDF Link:
<https://cdn.automationdirect.com/static/drawings/2d/C6A-STPBL-S3.pdf>
See store item page for other formats.