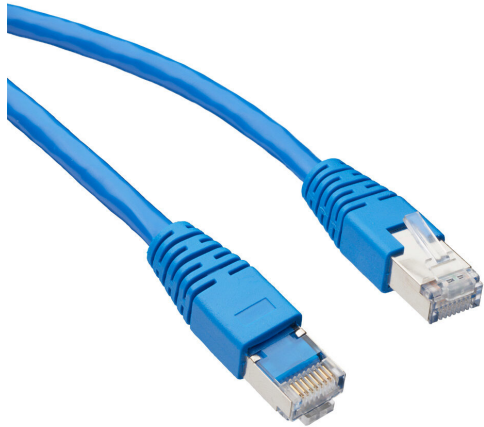


# C6A-STPBL-S10 Cut Sheet



AutomationDirect Cat6a Ethernet straight-through patch cable, STP (overall foil shield), RJ45 male to RJ45 male, 10ft cable length, blue. For use with 10/100/1000/10000 Mbps networks.

For complete product information, please see this item on our store at the following link:



<https://www.automationdirect.com/pn/C6A-STPBL-S10>

---

## Technical Specifications

<b>Brand</b>	AutomationDirect
<b>Item</b>	Cable
<b>Cable Type</b>	Cat6a Ethernet straight-through patch
<b>Connection 1</b>	RJ45 male
<b>Connection 2</b>	RJ45 male
<b>Jacket Material</b>	PVC
<b>Jacket Color</b>	Blue
<b>Shield Type</b>	STP (overall foil shield)
<b>Cable Length</b>	10ft
<b>For Use With</b>	10/100/1000/10000 Mbps networks

---

## Agency Approvals

<b>UL Listed File #</b>	None
<b>UL Recognized File #</b>	None
<b>UL Hazardous File #</b>	None
<b>CE</b>	<a href="#">View CE declarations</a>
<b>CSA File #</b>	None
<b>RoHS Status</b>	Yes (See CE Doc)
<b>EU REACH</b>	<a href="#">View EU REACH document</a>