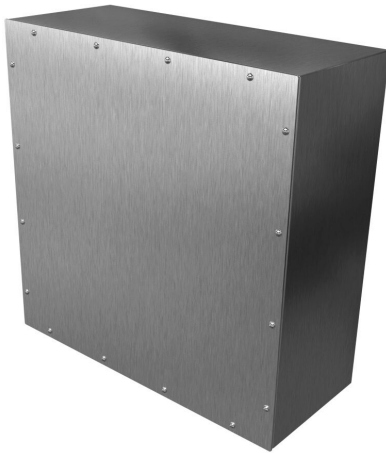


# C4XSC242410SS Cut Sheet



Hammond enclosure, NEMA 3/4X/12, 24 x 24 x 10in (HxWxD), wall mount, 304 stainless steel, #4 brush finish, screw cover.

For complete product information, please see this item on our store at the following link:



<https://www.automationdirect.com/pn/C4XSC242410SS>

## Technical Specifications

<b>Brand</b>	Hammond
<b>Item</b>	Enclosure
<b>Slope Top</b>	No
<b>3-Piece Assembly</b>	No
<b>Vented</b>	No
<b>NEMA Rating</b>	3/4X/12
<b>IP Rating</b>	IP66
<b>Nominal Enclosure Dimensions</b>	24 x 24 x 10in (HxWxD)
<b>Enclosure Height</b>	24.19in
<b>Enclosure Width</b>	24.19in
<b>Enclosure Depth</b>	10.23in
<b>Mounting</b>	Wall
<b>Integral Mounting Feet</b>	No
<b>Integral Mounting Flange</b>	No
<b>Dual Access</b>	No
<b>Knockouts</b>	No
<b>Bottom Gland Plate</b>	No
<b>Material</b>	304 stainless steel
<b>Finish</b>	#4 brush
<b>Cover Type</b>	Screw cover
<b>Padlockable</b>	No
<b>Keylocking</b>	No

## Agency Approvals

<b>UL Listed File #</b>	E65324
<b>UL Recognized File #</b>	None
<b>UL Hazardous File #</b>	None
<b>CE</b>	<a href="#">View CE declarations</a>
<b>CSA File #</b>	None
<b>RoHS Status</b>	Yes (See CE Doc)
<b>EU REACH</b>	<a href="#">View EU REACH document</a>