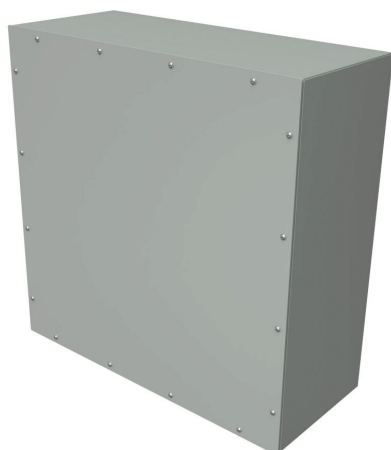


C3SC242410GY Cut Sheet



Hammond enclosure, NEMA 3/4/12, 24 x 24 x 10in (HxWxD), wall mount, carbon steel, ANSI 61 gray, powder coat finish, screw cover.

For complete product information, please see this item on our store at the following link:



<https://www.automationdirect.com/pn/C3SC242410GY>

Technical Specifications

Brand	Hammond
Item	Enclosure
Slope Top	No
3-Piece Assembly	No
Vented	No
NEMA Rating	3/4/12
IP Rating	IP66
Nominal Enclosure Dimensions	24 x 24 x 10in (HxWxD)
Enclosure Height	24.19in
Enclosure Width	24.19in
Enclosure Depth	10.23in
Mounting	Wall

Integral Mounting Feet	No
Integral Mounting Flange	No
Dual Access	No
Knockouts	No
Bottom Gland Plate	No
Material	Carbon steel
Color	ANSI 61 gray
Finish	Powder coat
Cover Type	Screw cover
Shelf	No
Padlockable	No
Keylocking	No

Agency Approvals

UL Listed File #	E65324
UL Recognized File #	None
UL Hazardous File #	None
CE	View CE declarations
CSA File #	None
RoHS Status	Yes (See CE Doc)
EU REACH	View EU REACH document

Dimensional Drawings



2D Drawing PDF Link:
<https://cdn.automationdirect.com/static/drawings/2d/C3SC242410GY.pdf>
See store item page for other formats.