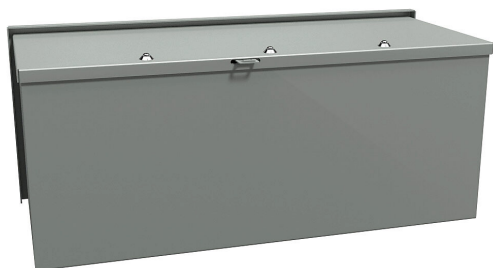


C3RWT1024 Cut Sheet



Hammond wiring trough, 10 x 10 x 24in (HxDxL), NEMA 3R, wall mount, carbon steel, ANSI 61 gray, powder coat finish, screw cover.

For complete product information, please see this item on our store at the following link:



<https://www.automationdirect.com/pn/C3RWT1024>

Technical Specifications

| | |
|-------------------------------------|------------------------|
| Brand | Hammond |
| Item | Wiring trough |
| NEMA Rating | 3R |
| IP Rating | IP24 |
| Nominal Enclosure Dimensions | 10 x 24 x 10in (HxWxD) |
| Enclosure Height | 10.00in |
| Enclosure Depth | 10.44in |
| Enclosure Length | 24.88in |

| | |
|--------------------------------|-------------------------|
| Mounting | Wall |
| Knockouts | No |
| Material | Carbon steel |
| Color | ANSI 61 gray |
| Finish | Powder coat |
| Cover Type | Screw cover |
| Padlockable | Yes |
| Padlock Attachment Type | Padlock hasp and staple |

Agency Approvals

| | |
|-----------------------------|---|
| UL Listed File # | E186830 |
| UL Recognized File # | None |
| UL Hazardous File # | None |
| CSA File # | LL21312 |
| RoHS Status | Meets RoHS Chemical Restrictions - No CE (See RoHS Statement Below) |
| EU REACH | View EU REACH document |

Dimensional Drawings



2D Drawing PDF Link:
<https://cdn.automationdirect.com/static/drawings/C3RWT1024.pdf>
See store item page for other formats.