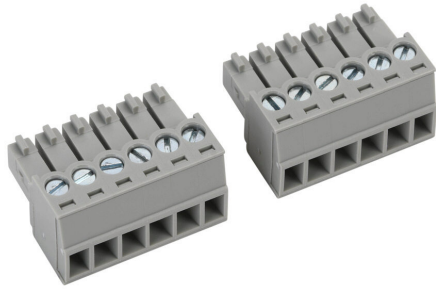


C2-6TB Cut Sheet



CLICK terminal blocks, 90-degree screw type, replacement, 6-pole. For use with C2-DCM communication module.

For complete product information, please see this item on our store at the following link:



<https://www.automationdirect.com/pn/C2-6TB>

Technical Specifications

Brand	CLICK
Item	Terminal blocks
Terminal Block Type	90-degree screw type
Replacement	Yes
Number of Poles	6
For Use With	C2-DCM communication module

Agency Approvals

UL Listed File #	E157382
UL Recognized File #	None
UL Hazardous File #	None
CE	View CE declarations
CSA File #	None
RoHS Status	Yes (See CE Doc)
EU REACH	View EU REACH document