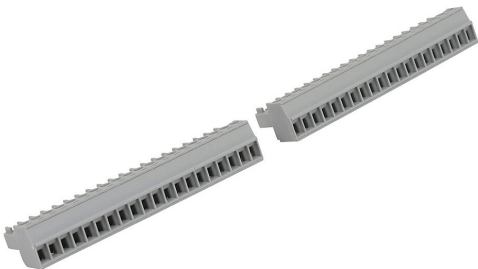


C0-16TB Cut Sheet



CLICK terminal blocks, 90-degree screw type, replacement, 20-pole. Package of 2. For use with CLICK 16-point I/O modules and CLICK PLCs built-in I/O.

For complete product information, please see this item on our store at the following link:



<https://www.automationdirect.com/pn/C0-16TB>

Technical Specifications

| | |
|---------------------|---|
| Brand | CLICK |
| Item | Terminal blocks |
| Terminal Block Type | 90-degree screw type |
| Replacement | Yes |
| Number of Poles | 20 |
| Quantity per Pack | 2 |
| For Use With | CLICK 16-point I/O modules and CLICK PLCs built-in I/O |

Agency Approvals

| | |
|----------------------|--|
| UL Listed File # | None |
| UL Recognized File # | None |
| UL Hazardous File # | None |
| CE | View CE declarations |
| CSA File # | None |
| RoHS Status | Yes (See CE Doc) |
| EU REACH | View EU REACH document |