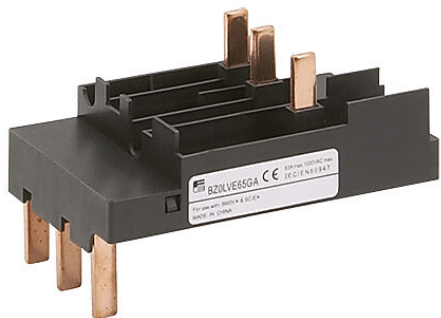


# BZ0LVE51GA Cut Sheet



Fuji Electric link module, for use with BM3V series manual motor protector and SC-E1x, SC-E2x or SC-E2Sx contactors with DC Coils.

For complete product information, please see this item on our store at the following link:



<https://www.automationdirect.com/pn/BZ0LVE51GA>

## Technical Specifications

Brand	Fuji Electric
Item	Link module
For Use With	BM3V series manual motor protector and SC-E1x, SC-E2x or SC-E2Sx contactors with DC Coils

## Agency Approvals

UL Listed File #	E211710
UL Recognized File #	None
UL Hazardous File #	None
CE	<a href="#">View CE declarations</a>
RoHS Status	Yes (See CE Doc)
EU REACH	<a href="#">View EU REACH document</a>