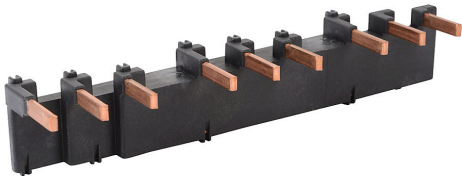


# BZ0BV13A Cut Sheet



Fuji Electric busbar, 126A Max, cut to length not permitted, connects up to 3 BM3V MMS units with one (9mm wide) accessory.

For complete product information, please see this item on our store at the following link:



<https://www.automationdirect.com/pn/BZ0BV13A>

## Technical Specifications

Brand	Fuji Electric
Item	Busbar
Amperage Rating	126A Max
Cut to Length	Not permitted
Application	Connects up to 3 BM3V MMS units with one (9mm wide) accessory
Requires	1 BZ0BFVA feed-in terminal for connecting line power to the bus

## Agency Approvals

CE	<a href="#">View CE declarations</a>
RoHS Status	Yes (See CE Doc)
EU REACH	<a href="#">View EU REACH document</a>