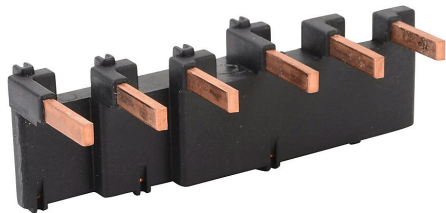


BZ0BV02A Cut Sheet



Fuji Electric busbar, 126A Max, cut to length not permitted, connects up to 2 BM3V MMS units without accessories.

For complete product information, please see this item on our store at the following link:



<https://www.automationdirect.com/pn/BZ0BV02A>

Technical Specifications

Brand	Fuji Electric
Item	Busbar
Amperage Rating	126A Max
Cut to Length	Not permitted
Application	Connects up to 2 BM3V MMS units without accessories
Requires	1 BZ0BFVA feed-in terminal for connecting line power to the bus

Agency Approvals

CE	View CE declarations
RoHS Status	Yes (See CE Doc)
EU REACH	View EU REACH document