

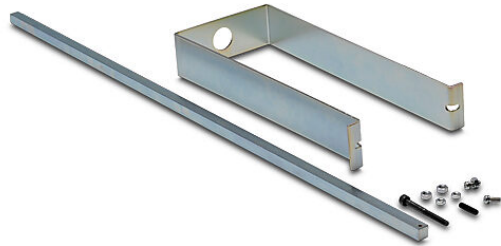
# BZ-VS2-24 Cut Sheet

Fuji Electric shaft, 24in length. For use with BW9V0HA and BW9V0JA rotary disconnect handles.

For complete product information, please see this item on our store at the following link:



<https://www.automationdirect.com/pn/BZ-VS2-24>



## Technical Specifications

<b>Brand</b>	Fuji Electric
<b>Item</b>	Shaft
<b>Shaft Length</b>	24in
<b>For Use With</b>	BW9V0HA and BW9V0JA rotary disconnect handles
<b>Additional Information</b>	30.36in maximum mounting depth

## Agency Approvals

<b>UL Listed File #</b>	None
<b>UL Recognized File #</b>	None
<b>UL Hazardous File #</b>	None
<b>CE</b>	<a href="#">View CE declarations</a>
<b>CSA File #</b>	None
<b>RoHS Status</b>	Yes (See CE Doc)
<b>EU REACH</b>	<a href="#">View EU REACH document</a>