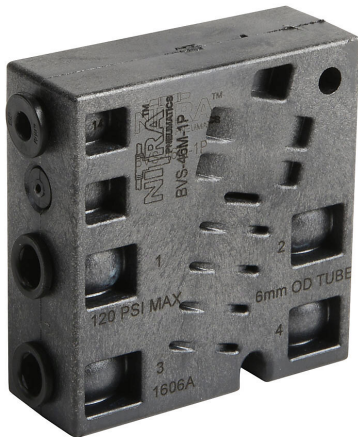


BVS-46M-1P Cut Sheet



NITRA pilot valve, 4-port (4-way), 2-position, single air pilot spring return, (1) 6mm PTC tubing inlet(s), (2) 6mm PTC tubing outlet(s), (1) 6mm PTC tubing exhaust(s), (1) 5/32in (4mm) PTC tubing, Cv=0.8.

For complete product information, please see this item on our store at the following link:



<https://www.automationdirect.com/pn/BVS-46M-1P>

Technical Specifications

Brand	NITRA
Item	Valve
Working Fluid	Pneumatic
Valve Type	Pilot directional control
Port Quantity	4-port (4-way)
Number Of Positions	2
Action	Single air pilot spring return
Body Material	Fiberglass-reinforced thermoplastic
Mounting	Optional manifold
Inlet Port	(1) 6mm push-to-connect tubing
Outlet Port	(2) 6mm push-to-connect tubing
Exhaust Port	(1) 6mm push-to-connect tubing
Pilot Port	(1) 5/32in (4mm) push-to-connect tubing
Flow Coefficient	0.8
Maximum Operating Pressure	120 psi (8.3 bar)
Form Factor	Standard

Agency Approvals

UL Listed File #	None
UL Recognized File #	None
UL Hazardous File #	None
CE	None
CSA File #	None
RoHS Status	No
EU REACH	View EU REACH document