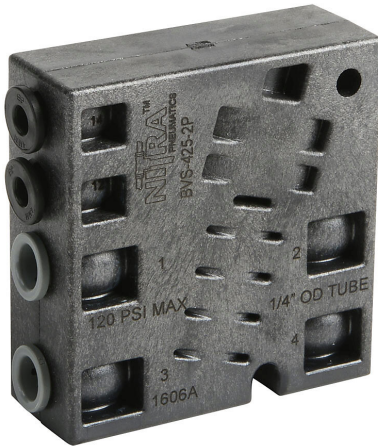


BVS-425-2P Cut Sheet



NITRA pilot valve, 4-port (4-way), 2-position, double air pilot, (1) 1/4in PTC tubing inlet(s), (2) 1/4in PTC tubing outlet(s), (1) 1/4in PTC tubing exhaust(s), (2) 5/32in (4mm) push-to-connect tubing pilot(s), Cv=0.8.

For complete product information, please see this item on our store at the following link:



<https://www.automationdirect.com/pn/BVS-425-2P>

Technical Specifications

Brand	NITRA
Item	Valve
Working Fluid	Pneumatic
Valve Type	Pilot directional control
Port Quantity	4-port (4-way)
Number Of Positions	2
Action	Double air pilot
Body Material	Fiberglass-reinforced thermoplastic

Mounting	Optional manifold
Inlet Port	(1) 1/4in push-to-connect tubing
Outlet Port	(2) 1/4in push-to-connect tubing
Exhaust Port	(1) 1/4in push-to-connect tubing
Pilot Port	(2) 5/32in (4mm) push-to-connect tubing
Flow Coefficient	0.8
Maximum Operating Pressure	120 psi (8.3 bar)
Form Factor	Standard

Agency Approvals

UL Listed File #	None
UL Recognized File #	None
UL Hazardous File #	None
CE	None
CSA File #	None
RoHS Status	No
EU REACH	View EU REACH document

Dimensional Drawings



2D Drawing PDF Link:
<https://cdn.automationdirect.com/static/drawings/BVS-425-2P.pdf>
See store item page for other formats.