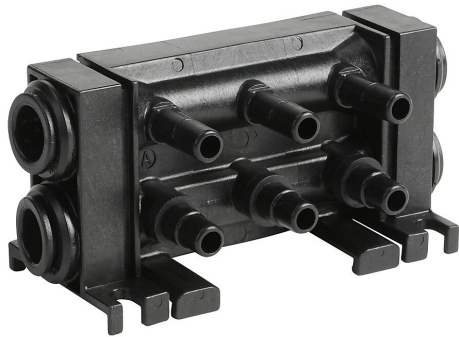


BVM-436M Cut Sheet



NITRA pneumatic modular valve manifold, fiberglass-reinforced thermoplastic, (3) stations, (2) 10mm push-to-connect tubing inlet(s), (2) 10mm push-to-connect tubing exhaust(s). For use with BVS-46M series valves.

For complete product information, please see this item on our store at the following link:



<https://www.automationdirect.com/pn/BVM-436M>

Technical Specifications

Brand	NITRA
Item	Modular valve manifold
Working Fluid	Pneumatic
Material	Fiberglass-reinforced thermoplastic
Number of Stations	3
Inlet Port	(2) 10mm push-to-connect tubing
Exhaust Port	(2) 10mm push-to-connect tubing
For Use With	BVS-46M series valves

Agency Approvals

UL Listed File #	None
UL Recognized File #	None
UL Hazardous File #	None
CE	None
CSA File #	None
RoHS Status	No
EU REACH	View EU REACH document

Dimensional Drawings



2D Drawing PDF Link:
<https://cdn.automationdirect.com/static/drawings/BVM-436M.pdf>
See store item page for other formats.