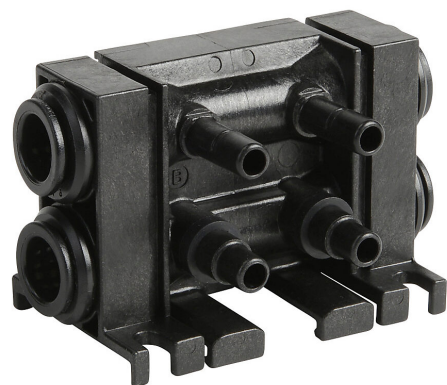


BVM-426M Cut Sheet



NITRA pneumatic modular valve manifold, fiberglass-reinforced thermoplastic, (2) stations, (2) 10mm push-to-connect tubing inlet(s), (2) 10mm push-to-connect tubing exhaust(s). For use with BVS-46M series valves.

For complete product information, please see this item on our store at the following link:



<https://www.automationdirect.com/pn/BVM-426M>

Technical Specifications

Brand	NITRA
Item	Pneumatic Modular valve manifold
Material	Fiberglass-reinforced thermoplastic
Number of Stations	2
Inlet Port	(2) 10mm push-to-connect tubing
Exhaust Port	(2) 10mm push-to-connect tubing
For Use With	BVS-46M series valves

Agency Approvals

UL Listed File #	None
UL Recognized File #	None
UL Hazardous File #	None
CE	None
CSA File #	None
RoHS Status	No
EU REACH	View EU REACH document