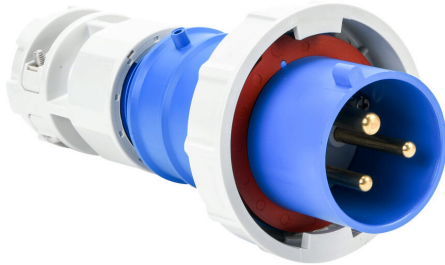


# BRY330P6W Cut Sheet



Bryant watertight pin and sleeve plug, 30A, 250 VAC, 1-phase, 2-pole, 3-wire, 6 hour, accepts cord size 0.565-0.93in, IP67, nylon housing, blue.

For complete product information, please see this item on our store at the following link:



<https://www.automationdirect.com/pn/BRY330P6W>

## Technical Specifications

<b>Brand</b>	Bryant
<b>Item</b>	Plug
<b>Application</b>	Watertight
<b>Wiring Device Type</b>	Pin and sleeve
<b>With Cap</b>	No
<b>Amperage Rating</b>	30A
<b>Voltage Rating</b>	250 VAC
<b>Number of Phases</b>	1
<b>Number of Poles</b>	2

<b>Number of Wires</b>	3
<b>Wire Size</b>	10-8 AWG
<b>Configuration</b>	6 hour
<b>Cord Diameter</b>	0.565-0.93in
<b>IP Rating</b>	IP67
<b>Housing Material</b>	Nylon
<b>Color</b>	Blue
<b>Manufacturer Part Number</b>	C330P6WA

## Agency Approvals

<b>UL Listed File #</b>	E146033
<b>CE</b>	<a href="#">View CE declarations</a>
<b>CSA File #</b>	N/A
<b>RoHS Status</b>	Yes (See CE Doc)
<b>EU REACH</b>	<a href="#">View EU REACH document</a>

## Dimensional Drawings



2D Drawing PDF Link:  
<https://cdn.automationdirect.com/static/drawings/2d/BRY330P6W.pdf>  
See store item page for other formats.