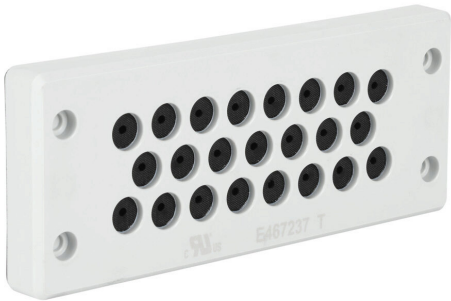


BRM23-1 Cut Sheet



Bimed BRM series cable entry system frame, nylon frame, 24-pin frame, gray, (23) 4-8.5mm opening(s), UL Type 12, 13 and 4X, IP65.

For complete product information, please see this item on our store at the following link:



<https://www.automationdirect.com/pn/BRM23-1>

Technical Specifications

Brand	Bimed
Item	Cable entry system frame
Series	BRM
Frame Material	Nylon
Frame Size	24-pin
Color	Gray
Number of Openings	(23) 4-8.5mm
IP Rating	IP65
UL Type	12, 13 and 4X
Includes	Mounting hardware

Agency Approvals

UL Listed File #	None
UL Recognized File #	E467237
UL Hazardous File #	None
CE	View CE declarations
CSA File #	None
RoHS Status	Yes (See CE Doc)
EU REACH	View EU REACH document

Dimensional Drawings



2D Drawing PDF Link:
<https://cdn.automationdirect.com/static/drawings/2d/BRM23-1.pdf>
See store item page for other formats.