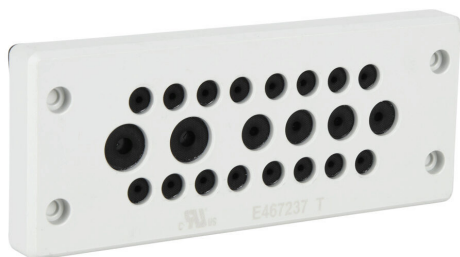


BRM22-1 Cut Sheet



Bimed BRM series cable entry system frame, nylon frame, 24mm, gray, (16) 3-6.5mm, (4) 5-9.2mm and (2) 8-12.5mm opening(s), IP65.

For complete product information, please see this item on our store at the following link:



<https://www.automationdirect.com/pn/BRM22-1>

Technical Specifications

Brand	Bimed
Item	Cable entry system frame
Series	BRM
Frame Material	Nylon
Frame Size	24mm
Color	Gray
Number of Openings	<ul style="list-style-type: none">• (16) 3-6.5mm• (4) 5-9.2mm• (2) 8-12.5mm
IP Rating	IP65
UL Type	12, 13 and 4X
Includes	Mounting hardware

Agency Approvals

UL Listed File #	None
UL Recognized File #	E467237
UL Hazardous File #	None
CE	View CE declarations
CSA File #	None
RoHS Status	Yes (See CE Doc)
EU REACH	View EU REACH document