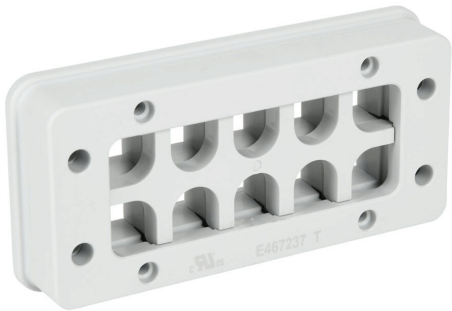


BPA-S-10-1-0 Cut Sheet



Bimed BPA series cable entry system frame, nylon frame, nylon grommet block, 24-pin frame, gray, (10) small opening(s), UL Type 12, 13 and 4X, IP66. Requires (10) Bimed BPA series small grommets.

For complete product information, please see this item on our store at the following link:



<https://www.automationdirect.com/pn/BPA-S-10-1-0>

Technical Specifications

Brand	Bimed
Item	Cable entry system frame
Series	BPA
Frame Material	Nylon
Grommet Block Material	Nylon
Frame Size	24-pin
Color	Gray
Number of Openings	(10) small
IP Rating	IP66
UL Type	12, 13 and 4X
Requires	(10) Bimed BPA series small grommets

Agency Approvals

UL Listed File #	None
UL Recognized File #	E467237
UL Hazardous File #	None
CE	View CE declarations
CSA File #	None
RoHS Status	Yes (See CE Doc)
EU REACH	View EU REACH document

Dimensional Drawings



2D Drawing PDF Link:
<https://cdn.automationdirect.com/static/drawings/2d/BPA-S-10-1-0.pdf>
See store item page for other formats.