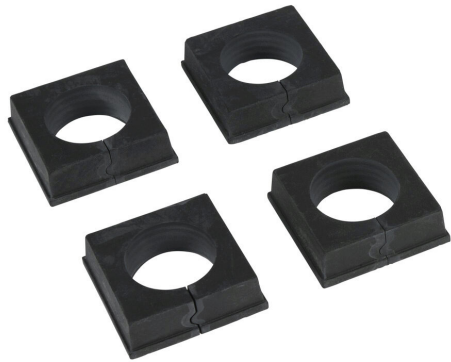


BPA-S-0028C Cut Sheet



Bimed BPA series large grommet, 1 opening(s), chloroprene, black, accepts 27.5-29.5mm diameter cable, UL Type 12, 13 and 14X. Package of 4. For use with Bimed BPA series cable entry system frame.

For complete product information, please see this item on our store at the following link:



<https://www.automationdirect.com/pn/BPA-S-0028C>

Technical Specifications

Brand	Bimed
Item	Grommet
Series	BPA
Application	General purpose
Number of Openings	1 opening(s)
Material	Chloroprene
Size	Large
Color	Black
Cable OD Range	27.5-29.5mm
IP Rating	IP66
UL Type	12, 13 and 14X
Quantity per Pack	4
For Use With	Bimed BPA series cable entry system frame

Agency Approvals

UL Listed File #	None
UL Recognized File #	E467237
UL Hazardous File #	None
CE	View CE declarations
CSA File #	None
RoHS Status	Yes (See CE Doc)
EU REACH	View EU REACH document

Dimensional Drawings



2D Drawing PDF Link:
<https://cdn.automationdirect.com/static/drawings/2d/BPA-S-0028C.pdf>
See store item page for other formats.