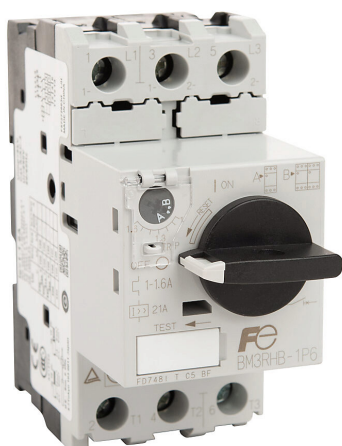


BM3RHB-1P6 Cut Sheet



Fuji Electric BM3R series manual motor protector, rotary, 1.6A, thermal overload, 1.0-1.6A adjustable, 20.8A instantaneous trip rating, open, 45mm frame.

For complete product information, please see this item on our store at the following link:



<https://www.automationdirect.com/pn/BM3RHB-1P6>

Technical Specifications

Brand	Fuji Electric
Series	BM3R
Item	Motor protector
Starter Type	Manual
Actuator Type	Rotary
Amperage Rating	1.6A
Voltage Rating	600 VAC
Horsepower Rating	3/4hp
Relay Type	Thermal overload
Operation Type	Bi-metallic
Full Load Amperage Range	1.0-1.6A adjustable
Instantaneous Trip Rating	20.8A
Number of Poles	3

Power Poles	(3) N.O.
Trip Class	Trip Class 10
Phase Loss Sensitive	Yes
Ground Fault Protection	No
SCCR Rating	50kA SCCR
UL Rating	UL 508 rated
Enclosure Type	Open
Frame	45mm
Mounting	35mm DIN rail
Connection	Screw terminal
Additional Information	For UL Type E listing, terminal cover BZ0TCRE and Short Circuit Alarm contact block BZ0TKUAB must be added to the MMS. Suitable as a motor disconnect

Agency Approvals

UL Listed File #	E211710
UL Recognized File #	None
UL Hazardous File #	None
CE	View CE declarations
RoHS Status	Yes (See CE Doc)
EU REACH	View EU REACH document

Dimensional Drawings



2D Drawing PDF Link:
<https://cdn.automationdirect.com/static/drawings/BM3RHB-1P6.pdf>
See store item page for other formats.