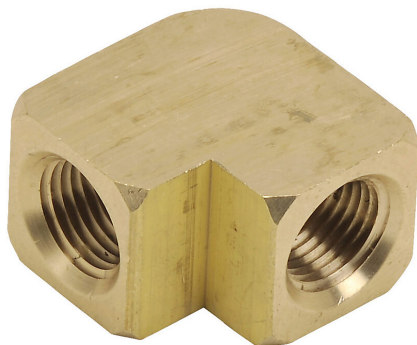


BFFE-18N Cut Sheet



NITRA pneumatic threaded fitting, elbow, brass body, brass threads, (1) 1/8in female NPT to (1) 1/8in female NPT. Package of 2.

For complete product information, please see this item on our store at the following link:



<https://www.automationdirect.com/pn/BFFE-18N>

Technical Specifications

Brand	NITRA
Item	Fitting
Working Fluid	Air or inert gas
Fitting Connection Type	Threaded
Fitting Type	Elbow
Body Material	Brass
Thread Material	Brass
Fitting Measurement Type	SAE
Connection	(1) 1/8in female NPT to (1) 1/8in female NPT
Operating Pressure	800 psi
Operating Temperature	-65 to 250 deg F
Quantity per Pack	2

Agency Approvals

UL Listed File #	None
UL Recognized File #	None
UL Hazardous File #	None
CE	None
CSA File #	None
RoHS Status	No
EU REACH	View EU REACH document

Dimensional Drawings



2D Drawing PDF Link:
<https://cdn.automationdirect.com/static/drawings/BFFE-18N.pdf>
See store item page for other formats.