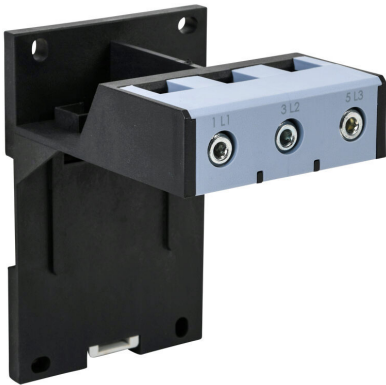


BF117-3D Cut Sheet



WEG Electric 35mm DIN rail/panel mount adapter, for use with RW117-3D series thermal overload relays.

For complete product information, please see this item on our store at the following link:



<https://www.automationdirect.com/pn/BF117-3D>

Technical Specifications

Brand	WEG Electric
Item	35mm DIN rail/panel mount adapter
For Use With	RW117-3D series thermal overload relays

Agency Approvals

UL Listed File #	E189202
UL Recognized File #	None
UL Hazardous File #	None
CE	View CE declarations
CSA File #	None
RoHS Status	Yes (See CE Doc)
EU REACH	View EU REACH document

Dimensional Drawings



2D Drawing PDF Link:
<https://cdn.automationdirect.com/static/drawings/2d/BF117-3D.pdf>
See store item page for other formats.